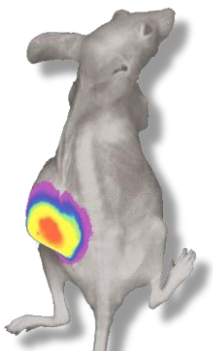


just as it is . . .

Lumi *i* In Vivo

Luminescence *In Vivo* Imaging System



Luminescence *In Vivo* Imaging System



High Quality Image sensor

Exceptional QE: 95% max

Cooling to -80°C

Personal Imaging System (Compact, Easy, Cost effective)

Bio Luminescence *In Vivo* Imaging

Small animal and Plant

Tumorization, Cell tracking and Gene expression

Lumi i In Vivo is a device that can image and analyze Luminescence signals from tissues and organisms. Using an optimized camera for macro-imaging, Lumi i In Vivo can obtain intuitive and high quality images. NEOimage program providing with Lumi i In Vivo analyzes luminescence images easily. Lumi i In Vivo has a simple design, is easy to use, fast and reliable.

High Sensitive Camera Sensor

Lumi i In Vivo's uses the highly innovative 1 Megapixel, back-illuminated CCD cameras, offer single photon sensitivity across a large field of view, at 26 fps.

With a 1024 x 724 sensor format and 13 μm pixel size, the resolving power, field of view and unparalleled speed of the camera sensor render it the most attractive and versatile CCD option for In Vivo imaging applications.

Active pixels	1024 x 724
Pixel size (w x h; μm)	13 x 13
Image area (mm)	13.3 x 13.3
Max readout rate (MHz)	30
Frame rates (fps)	26
Read noise (e-)	< 1
QE max	95%

Simple

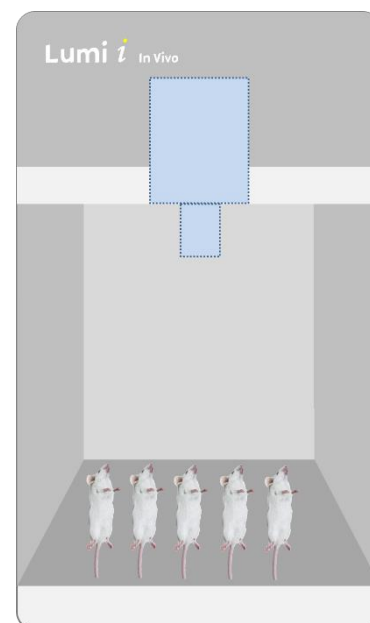
Lumi i In Vivo is structured as simple and optimal for quick and easy installation. It is also easy to move, manage, and maintain.

The Lumi i In Vivo has a compact size (30 x 30 x 51 cm), so it is ideal for small spaces. Due to its convenient size and portability, it can be used for a wide variety of applications.

Quick Imaging

Determining an appropriate exposure time is sometimes difficult. The process of determining the exposure time, capturing the images, merging the bright image and signal image is just a click away.

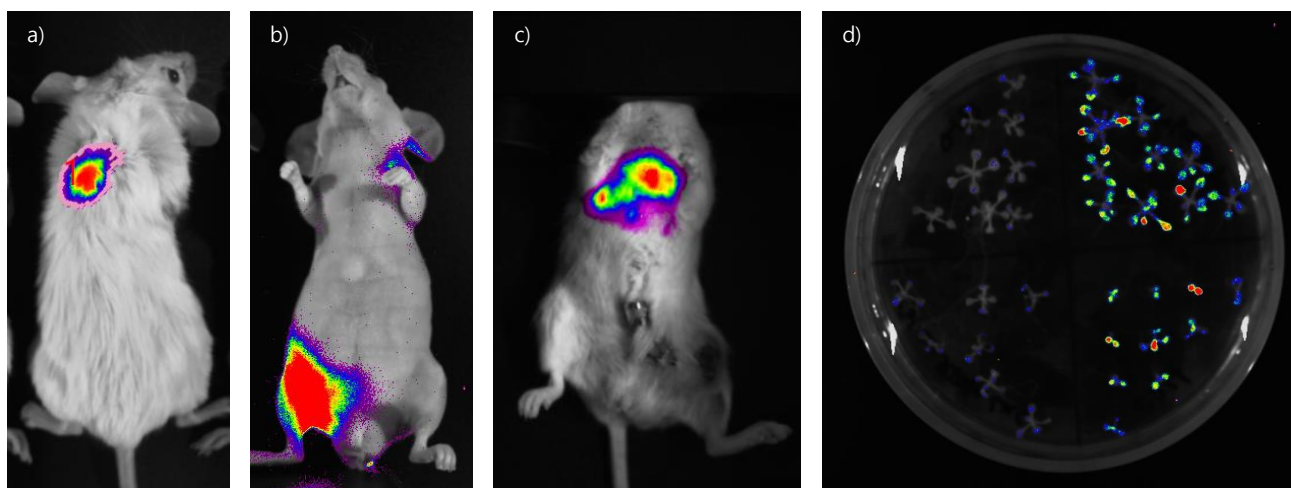
You don't have to worry about it and just click it once, because the quantification is done after calibrating for various conditions.



Simple structure faithful to functionality.

Easy to Use

Hardware and software are user-friendly. Camera and LED light are controlled by imaging program. All of functions - live window, adjust exposure time and gain, capture, quatitation and merging image are simple and intuitive.



a), b), c) Tumorization experiments. d) Gene expression in Arabidopsis.

Specification

Image Sensor	CCD sensor
Resolution	1024 x 724
Frame rate	Up to 26 fps
Quantum Efficiency	95% max
Cooling	-80°C
Pixel Size	13 x 13 um
Digital Output	16-bit
Aperture	Physical
Interface Connector	USB 3.0
Stage Heating	Yes
Capacity (Mouse)	5
Field of View	235 x 180 mm
Weight	23 Kg
Size (W x D x H)	300 x 300 x 510 mm

NeoScience Co., Ltd.

#111, Toyou 2cha, 131, Munwhawon-ro Yuseong-gu, Daejeon, South Korea, 34184
+82 70-7430-6829 www.invivoimage.com neoscience2011@gmail.com